

INDEX

INDEX.....	1
PRIMARY FAN INFORMATION	2
TYPICAL ARRANGEMENT PARALLEL SYSTEM.....	3
IMPELLER BLADE ADJUSTMENT	4
HOW TO USE QUICK REFERENCE PERFORMANCE CHARTS.....	5
7' FAN QUICK REFERENCE PERFORMANCE CHART.....	6
8' CURVE QUICK REFERENCE PERFORMANCE CHART	7
9' FAN QUICK REFERENCE PERFORMANCE CHART.....	8
10' FAN QUICK REFERENCE PERFORMANCE CHART.....	9
11' FAN QUICK REFERENCE PERFORMANCE CHART.....	10

ALL INFORMATION CONTAINED IN THIS CATALOG IS SUBJECT TO CHANGE AT ANY TIME.
INFORMATION SUPPLIED SHOULD NOT BE USED FOR CONSTRUCTION.
SPECIFIC INFORMATION WILL BE SUPPLIED UPON REQUEST.

SMJ, INC. DESIGNS AND MANUFACTURES AXIAL FLOW MINE FANS

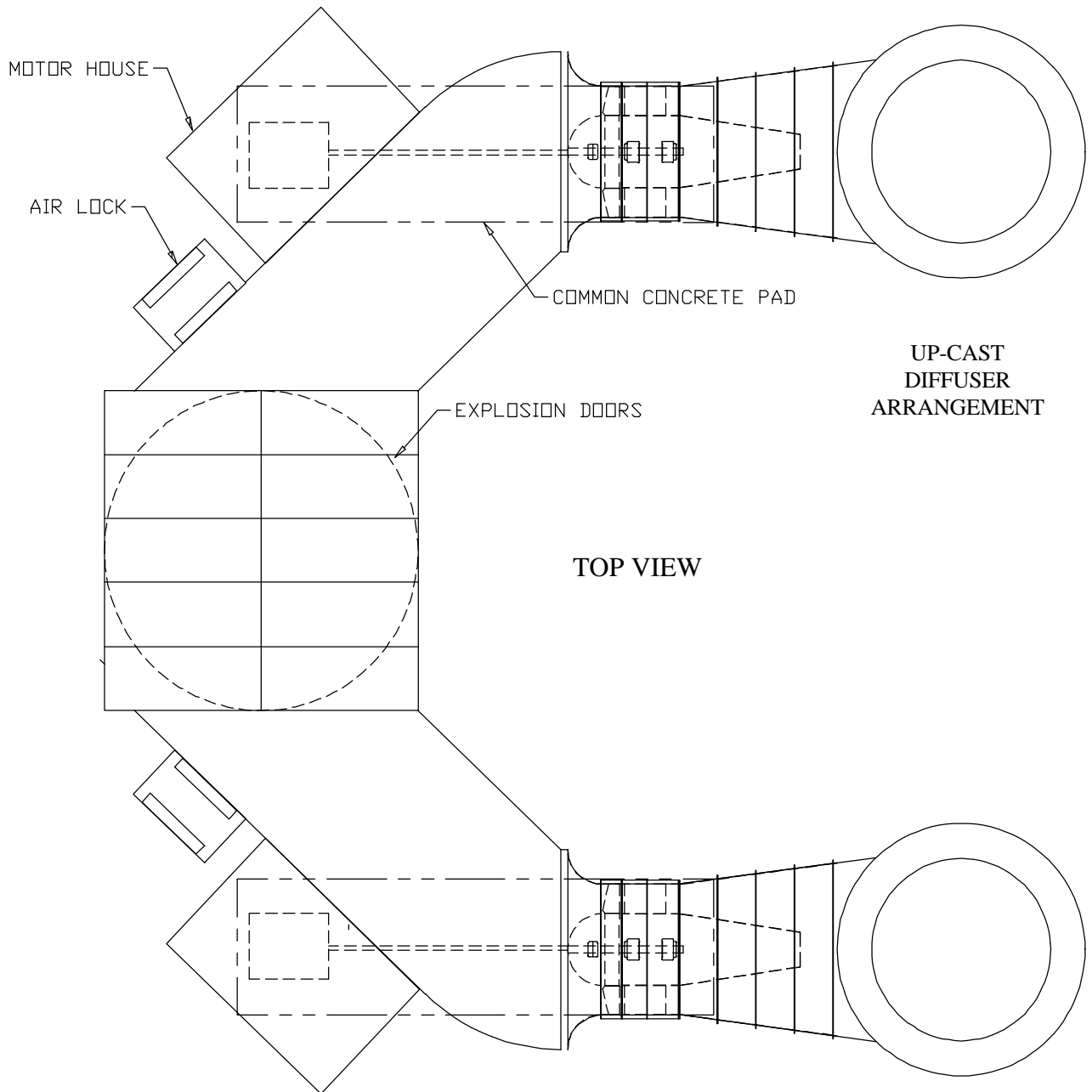
SIZE RANGE	7' TO 12' DIAMETER
NUMBER OF STAGES	1 OR 2
DRIVE METHODS	SHAFT AND BELT DRIVEN
MOUNTING	HORIZONTAL OR VERTICAL
PRESSURE RANGE	UP TO 30" W.G.
BLADE ADJUSTMENT	AT STAND STILL
ACCESSORIES INCLUDE	INLET BELLS INLET SILENCERS INLET BOXES OUTLET DIFFUSERS OUTLET BOXES WITH TURNING VANES UP-CAST OUTLET DIFFUSERS OUTLET SILENCERS INLET AND OUTLET DUCT WORK DESIGNS

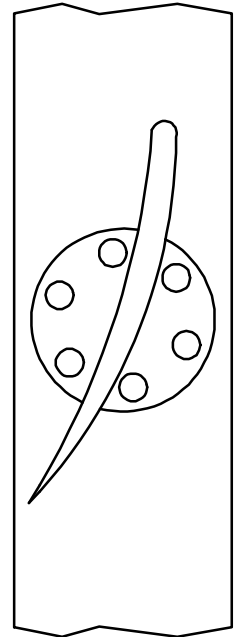
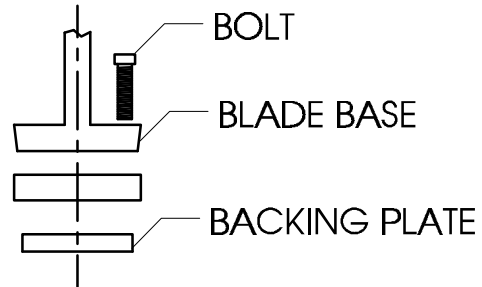
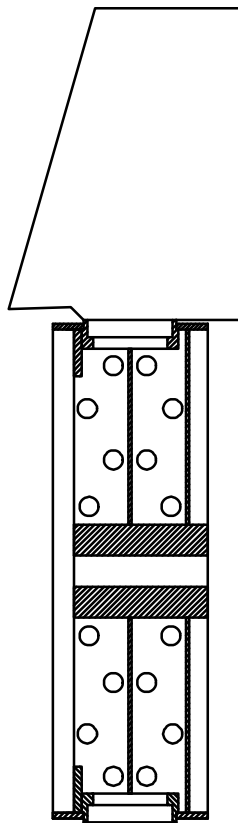
FAN PERFORMANCE

PERFORMANCE CURVES	ENCLOSED ARE QUICK REFERENCE FAN PERFORMANCE CURVES FOR 1' TO 10' DIAMETERS.
---------------------------	---

NOTE: IF YOU REQUIREMENT EXCEEDS THE PERFORMANCE SHOWN IN THE QUICK REFERENCE CHARTS, CONSULT THE FACTORY FOR ASSISTANCE.

FOR REFERENCE ONLY



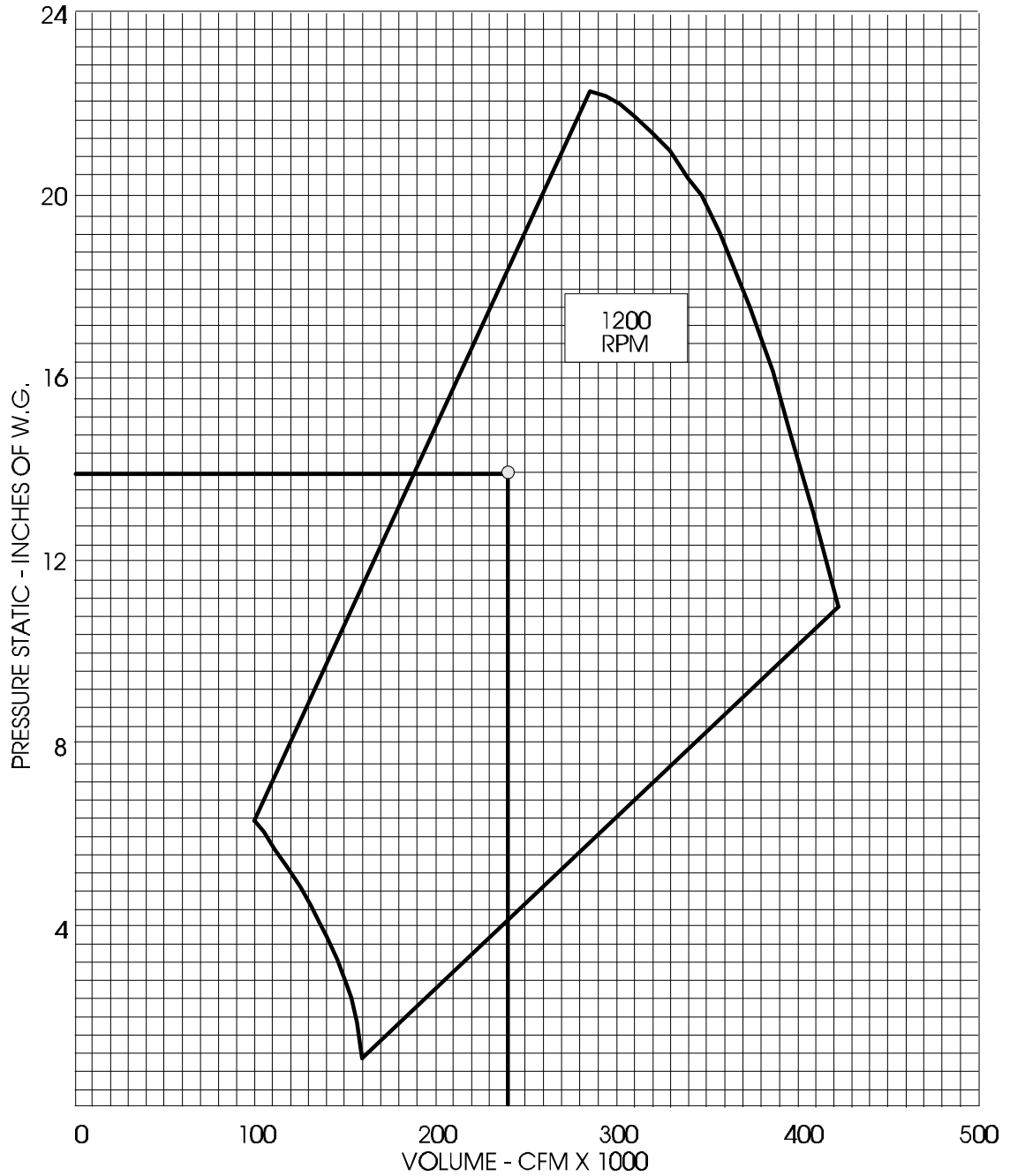


BLADES CAN BE EASILY ADJUSTED WITH FAN AT A STANDSTILL.

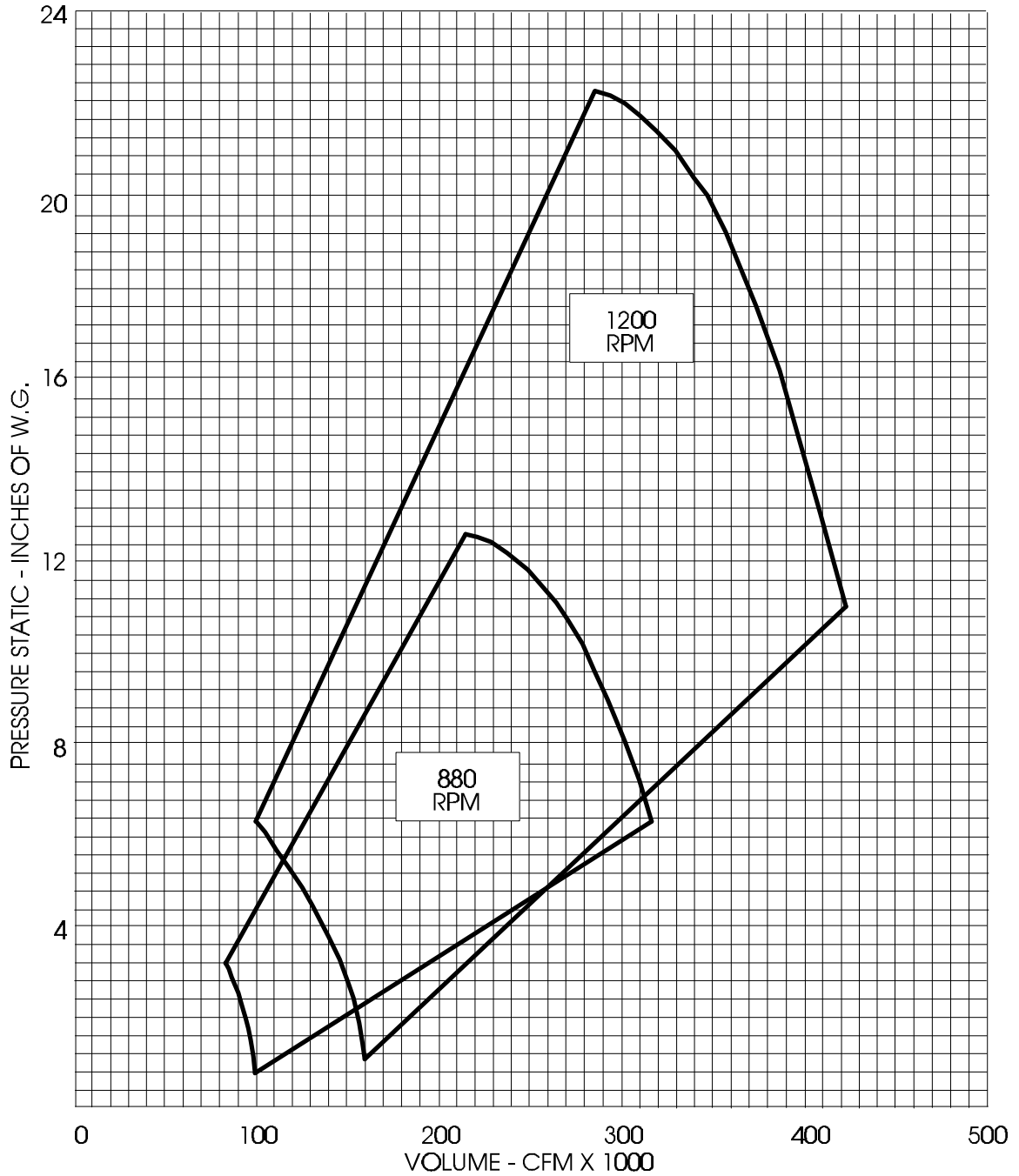
- REMOVE ACCESS PANEL LOCATED ON THE IMPELLER SECTION.
- THERE ARE 4 OR 6 BOLTS LOCATED AT THE BLADE BASE.
- LOOSEN THE BOLTS.
- SET THE BLADE PITCH TO THE DESIRED MARK.
- RE-TORQUE BOLTS.
- REPEAT THE PREVIOUS 3 STEPS FOR EACH BLADE.
- REPLACE ACCESS COVER.
- THE APPROXIMATE ADJUSTMENT TIME IS 45 MINUTES.

HOW TO USE QUICK REFERENCE PERFORMANCE CHARTS

THE INTERSECTING LINES BELOW SHOW AN OPERATION POINT OF:
VOLUME - 240,000 CFM - PRESSURE STATIC - 14" W.G.

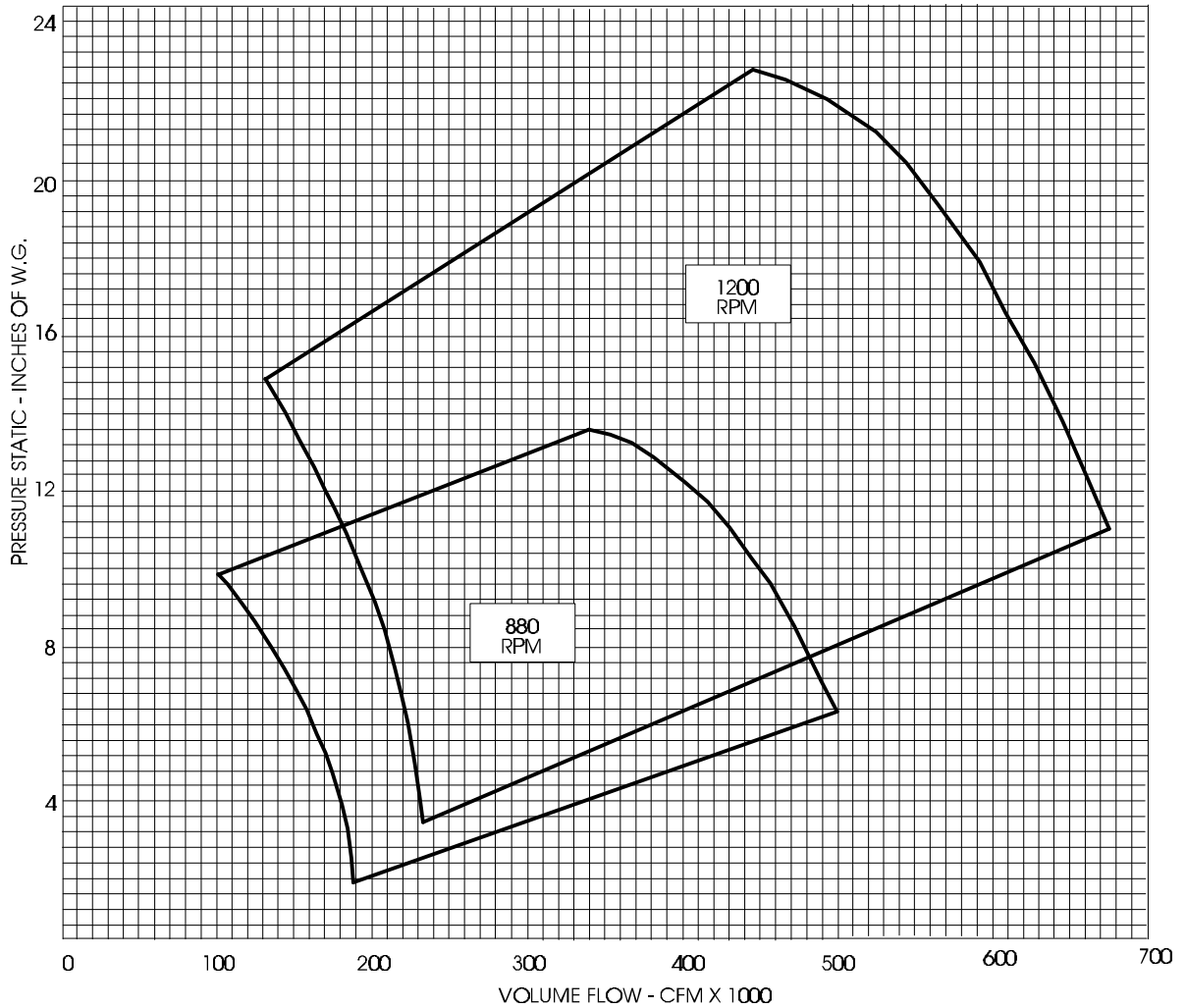


STANDARD AIR DENSITY 0.075 LB/FT³



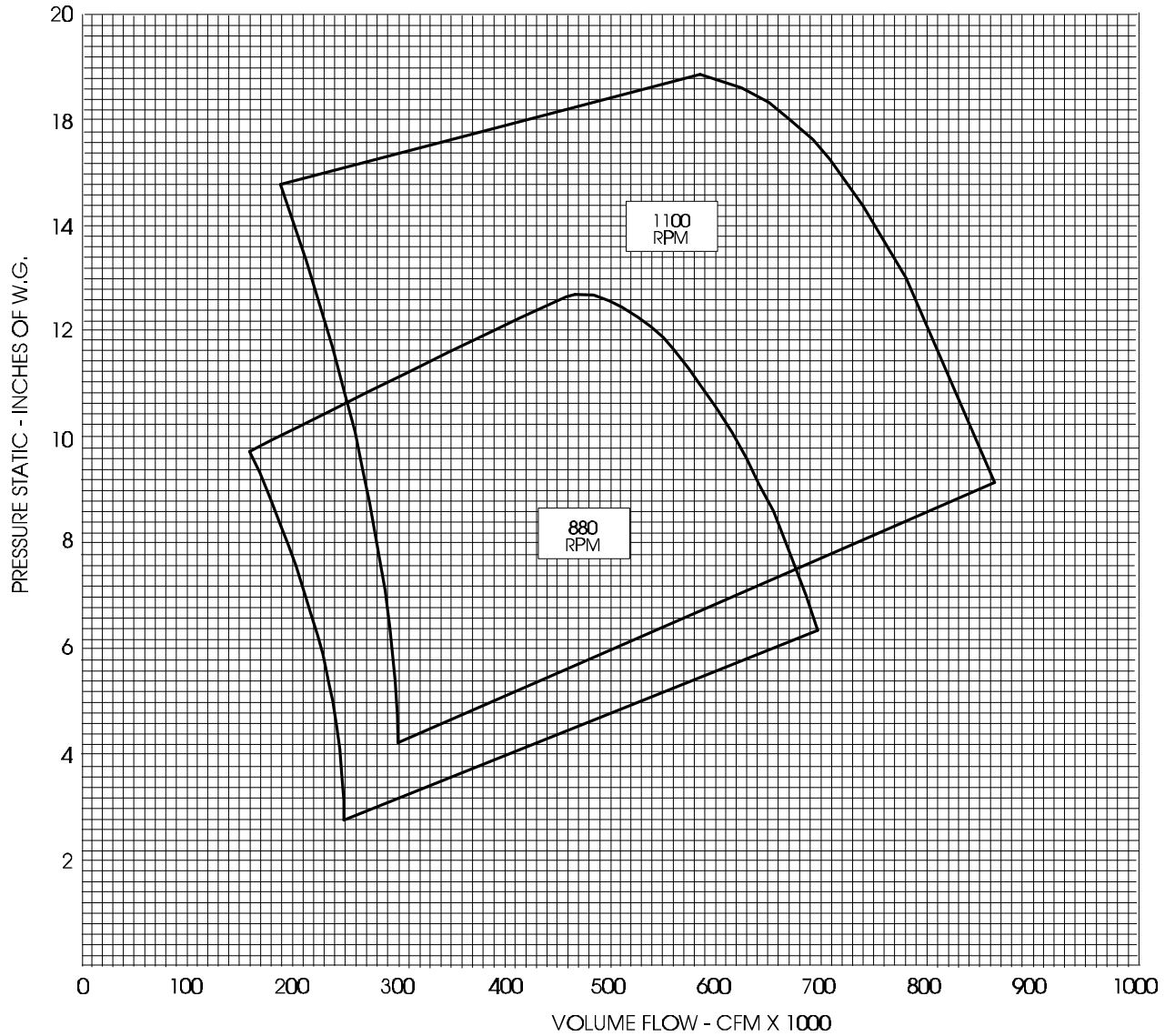
TWO STAGE ARRANGEMENTS ARE AVAILABLE FOR THIS SIZE.
CONSULT THE FACTORY FOR PERFORMANCE INFORMATION.

STANDARD AIR DENSITY 0.075 LB/FT³



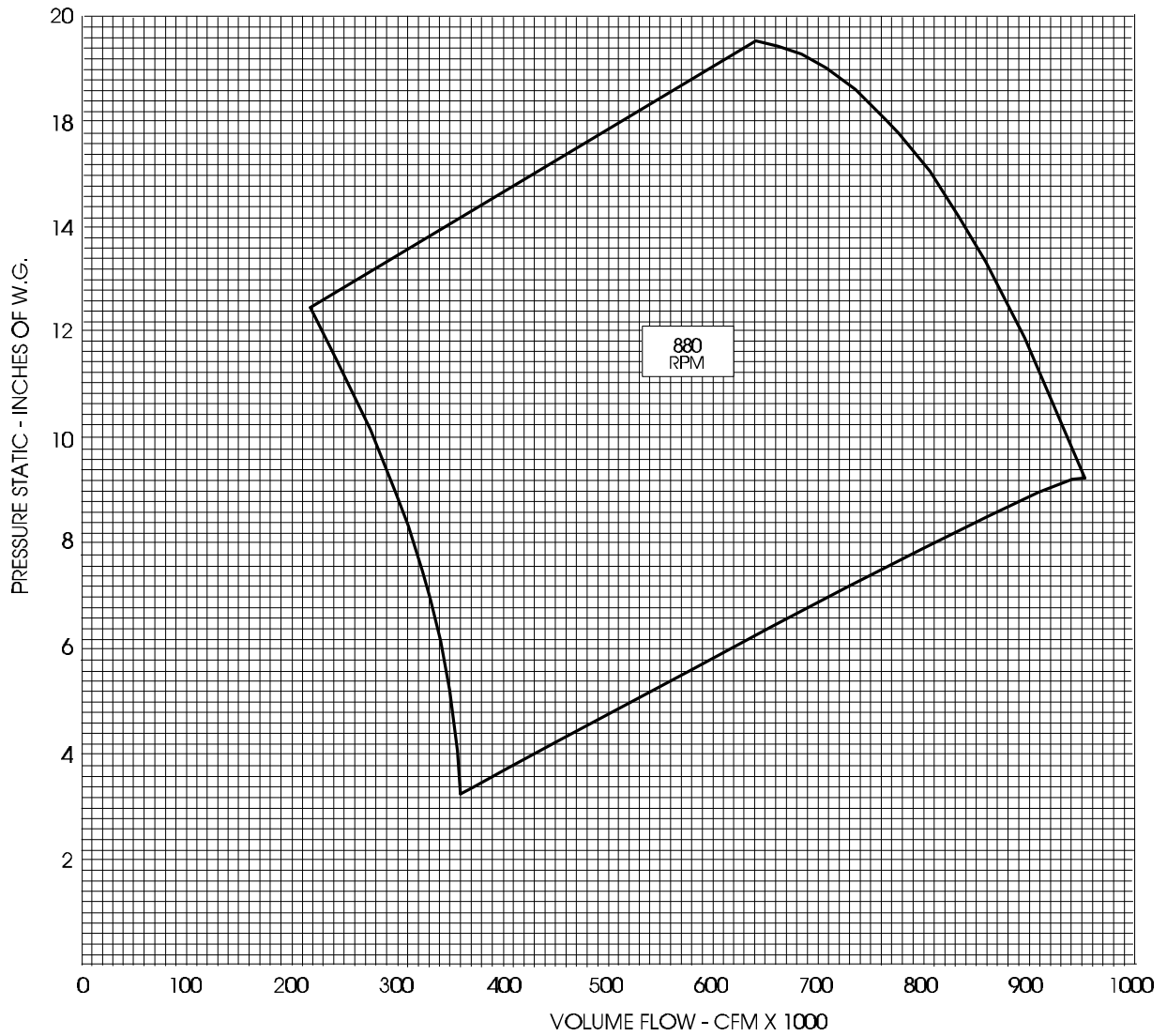
TWO STAGE ARRANGEMENTS ARE AVAILABLE FOR THIS SIZE.
CONSULT THE FACTORY FOR PERFORMANCE INFORMATION.

STANDARD AIR DENSITY 0.075 LB/FT³



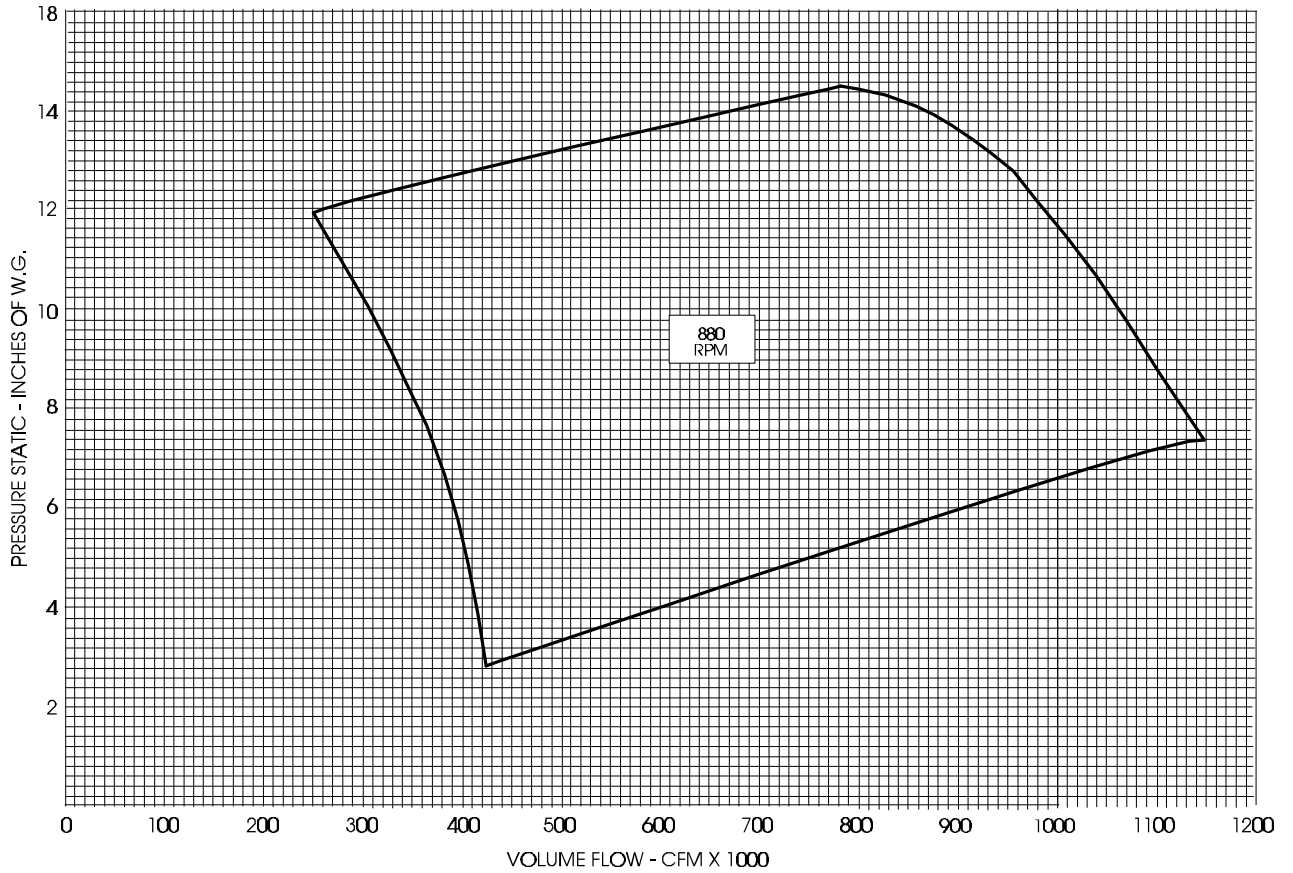
TWO STAGE ARRANGEMENTS ARE AVAILABLE FOR THIS SIZE.
CONSULT THE FACTORY FOR PERFORMANCE INFORMATION.

STANDARD AIR DENSITY 0.075 LB/FT³



TWO STAGE ARRANGEMENTS ARE AVAILABLE FOR THIS SIZE.
CONSULT THE FACTORY FOR PERFORMANCE INFORMATION.

STANDARD AIR DENSITY 0.075 LB/FT³



880
RPM

TWO STAGE ARRANGEMENTS ARE AVAILABLE FOR THIS SIZE.
CONSULT THE FACTORY FOR PERFORMANCE INFORMATION.